



EN

DEHUMIDIFIER

dry baby 11



dry digit 13
dry digit 17



OPERATING INSTRUCTIONS

Read the instructions carefully before operating or servicing the dehumidifier.
Observe all the safety instructions; failure to observe the instructions may lead to accidents and/or damage. Keep these instructions in a safe place for future reference.

GENERAL OPERATING AND SAFETY INSTRUCTIONS

- **This appliance is a highly efficient dehumidifier, designed for domestic use only!**
- Use this dehumidifier only as outlined in this manual. Any other use not recommended by the manufacturer may cause fire, electric shock or malfunctions.
- The unit contains refrigerant; keep it vertical at all times.
- Once you have opened the unit, keep it vertical to allow the refrigerant to stabilise and wait two hours before operating it.
- Ensure that the required voltage and frequency (220-240V/50Hz) match the available power source.
- Make sure the plug is inserted fully. Do not use multiple adapters. Do not touch the plug with wet hands. Make sure the plug is clean.
- This product is not a toy. Children should be adequately supervised to ensure that they do not play with the appliance.
- This dehumidifier can be used by children of 8 years of age and upwards, and by persons with reduced physical, sensorial and mental capacity, or who are not familiar with its operation, under the supervision or instruction of a person responsible for their safety, so that they are fully aware of the attendant risks.
- Do not allow the unit to be cleaned or serviced by unsupervised children.
- **Disconnect the mains power when the appliance is not in use or during cleaning operations. Keeping the appliance plugged in may cause electric shocks or accidents.**
- To disconnect the appliance, set the switch to OFF and remove the plug from the socket. Only pull on the plug. Do not pull the cord.
- Do not bend, drag or twist the cord, or apply force to remove it. **Do not operate the unit if its cable or plug are damaged; doing so can cause fires or electric shock.** If the power cord is damaged, it must be replaced by a service centre.
- Do not place heavy objects on top of the appliance.
- To prevent water spills, empty the water tank before moving the appliance.
- Do not tilt the dehumidifier onto one side or turn it upside down, as the water which runs out could damage the appliance.
- **Do not operate the unit on unstable or sloping surfaces: water leaks can cause it to malfunction or cause excessive vibration and running noise.**
- The dehumidifier must be positioned **at least 50 cm** away from the wall or other obstacles, so that the heat can dissipate correctly.
- **Close all open windows to maximise dehumidification efficiency.**
- **Do not insert objects or sharp instruments into the air outlet grille.**
- **Do not cover the air intake and outlet grilles in any way.**

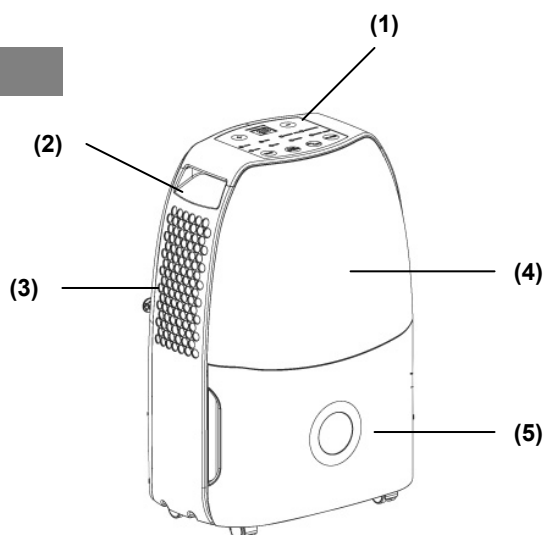
WARNING!

In the event of an anomaly, switch the appliance off and unplug it immediately. Do not dismantle, repair or modify this product freely. In the event of a malfunction, contact the after-sales service centre directly.

- Do not immerse the power cord, plug or any other part of the appliance in water or other liquids.
- Do not expose the dehumidifier to direct sunlight.
- Keep the appliance well away from sources of heat which could cause plastic parts to become warped.
- Do not spray insecticides, oils or paints near the appliance; doing so may damage its plastic parts or start a fire.
- **Keep flammable gases and oils away from the appliance!**
- **Do not move the appliance while it is operating; doing so can cause leaks and malfunction.**

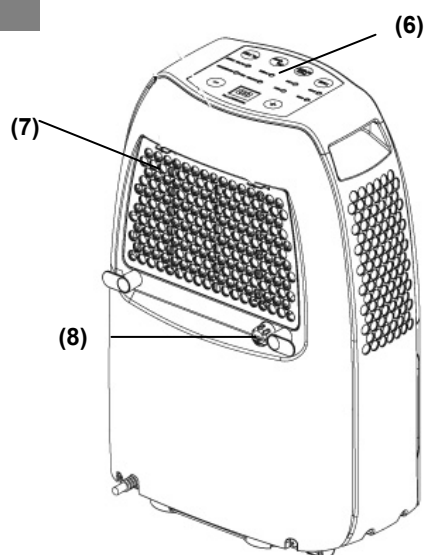
DESCRIPTION OF PARTS

FRONT VIEW



- 1) CONTROL PANEL (MECHANICAL OR DIGITAL)
- 2) CARRY HANDLES
- 3) DEHUMIDIFIED AIR OUTLET
- 4) FRONT PANEL
- 5) WATER TANK; CAN BE REMOVED FOR EMPTYING

REAR VIEW



- 6) CONTROL PANEL (MECHANICAL OR DIGITAL)
- 7) REAR PANEL WITH AIR FILTER
- 8) CONDENSATE DRAINING HOLE

OPERATING INSTRUCTIONS

APPLIANCE START-UP

Place the product on a flat and stable heat-resistant surface, at least 1 metre away from flammable or heat-sensitive materials and 50 cm away from walls or other obstructions.

Make sure the water tank is in the correct position.

Connect the power cord to a suitable electric socket (220-240V/50Hz).

Turn the appliance on with the humidity knob (Dry Baby 11) or ON/OFF button (Dry Digit 13 and 17) on the control panel.

OPERATING PRECAUTIONS

The appliance will only start operating if the humidity level in the room is above the set value.

The dehumidifier will continue to operate until the set humidity level has been reached, **with the exception of interruptions caused by a full tank**. In this case, empty and reinstall the tank: the dehumidifier will now start running again.

WARNING:

After each interruption of its operation, at least 3 minutes must pass before the dehumidifier starts up again: this delay prevents the compressor being damaged.

If, on the other hand, the set humidity percentage is higher than the level currently found in the room, the dehumidifier will not start.

If you follow the start up instructions but the dehumidifier does not start and the stand by led (Dry Baby 11) or display (Dry Digit 13 and 17) does not come on, or if the dehumidifier stops for no reason, make sure the plug and power cord are in good working order. After doing so, wait for 10 minutes and then restart the appliance. If the dehumidifier still does not start after 10 minutes, or if either the power cord or plug are damaged, switch off the appliance and contact an after-sales service centre.

WARNING:

When the dehumidifier is running, the compressor produces heat and the appliance emits warm air into the room. The room temperature will therefore tend to increase. This is completely normal.

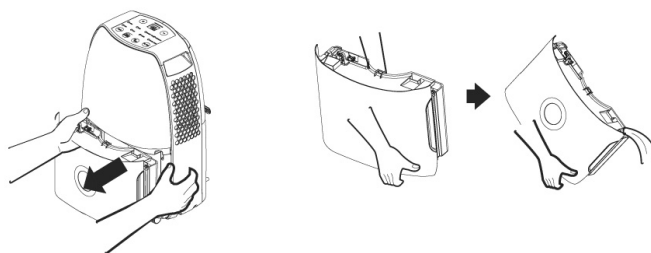
TURNING THE DEHUMIDIFIER OFF

To turn the dehumidifier off, turn the humidity knob counterclockwise to OFF (Dry Baby 11), see from the front, or press the ON/OFF button (Dry Digit 13 and 17). This shuts off power to the unit. Unplug the appliance if you do not intend to use it for some time.

HOW TO ELIMINATE CONDENSATION

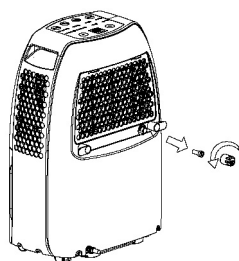
The water extracted from the air can be collected in the provided front tank.

When the tank is full, the unit turns off. The FULL TANK led turns on and the unit beeps for about 10 seconds. Empty the tank. Use two hands to empty the tank.



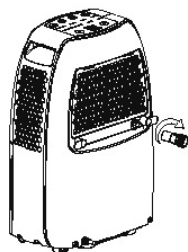
CONTINUOUS CONDENSATE DRAINAGE

You can fit a 14 mm internal diameter PVC hose (not included) to drain the tank continuous.

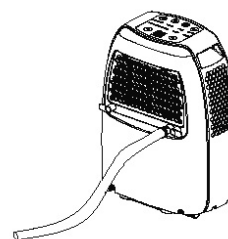


Remove the drain hole cap by turning it counterclockwise.

Remove the rubber plug.

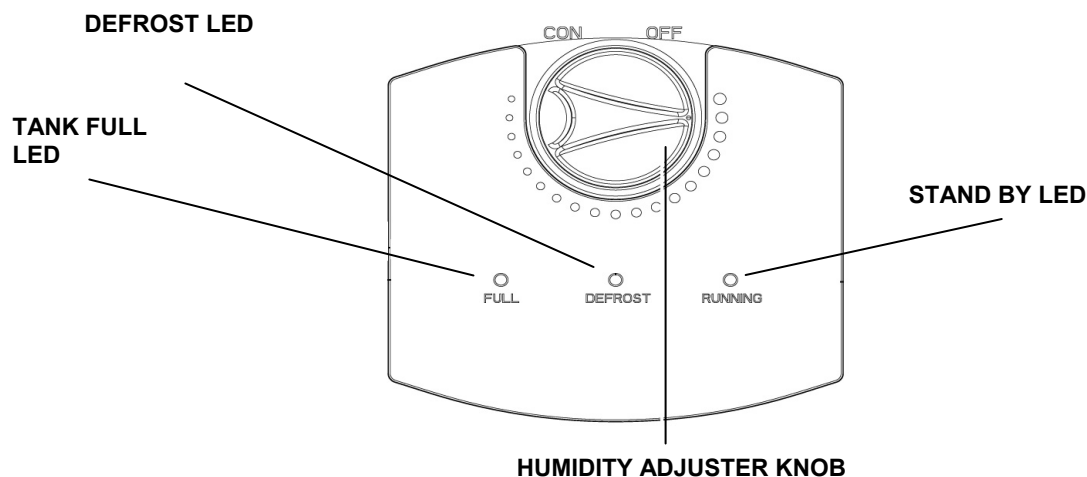


Screw the drain hose fitting (included) into the drain hole.



Connect a PVC hose (not supplied) to the drain hole. Connect the hose to water drain.

DRY BABY 11 CONTROL PANEL



HUMIDITY ADJUSTER KNOB: sets the desired humidity %. Turn the knob fully counterclockwise (seen from in front of the appliance), to turn the appliance OFF.

Turn the knob clockwise (seen from in front of the appliance) to set the humidity % (decreasing) (80-35%).

TANK FULL LED: when the tank is full, the TANK FULL LED comes on and the appliance stops running. A 10 second beep sounds. Remove the tank and empty it (as indicated in "HOW TO ELIMINATE CONDENSATION"), then restore it; the dehumidifier will start running again.

STAND BY LED.

DEFROST LED: the dehumidifier is designed to operate at ambient temperatures from **+ 5°C to + 35°C**.

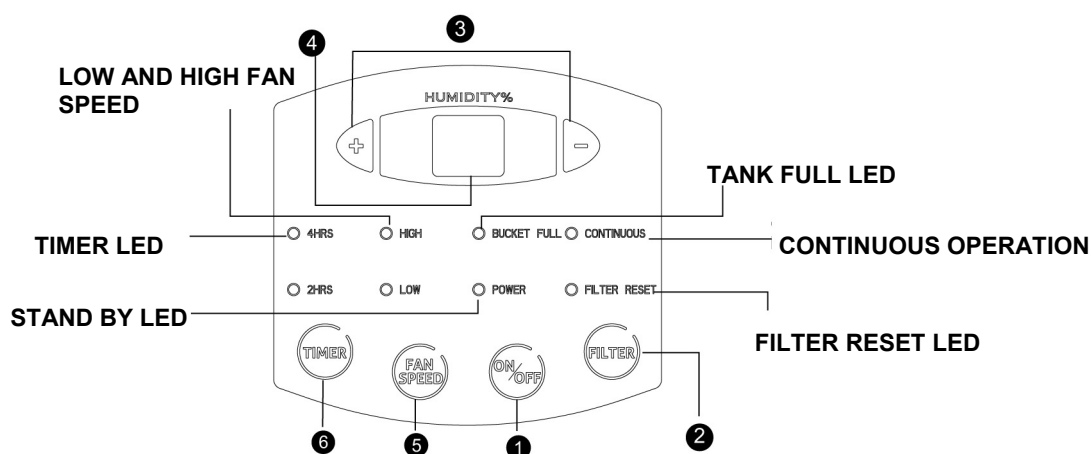
If it is operated at low temperatures, ice may form on the evaporator, degrading its operation.

When this happens the dehumidifier goes into defrost mode and the defrost LED comes on. The compressor stops, but the fan continues running.

We recommend not using the dehumidifier in room temperatures lower than 5°C.

AUTO RESTART: the dehumidifier starts up again after a power failure.

DRY DIGIT 13 AND 17 CONTROL PANEL



1. ON/OFF BUTTON: press this button to turn the dehumidifier on and off.

2. FILTER BUTTON: after 250 hours of operation, the FILTER RESET led turns on to indicate that it is time to clean the filter. Take the filter out and clean it. Then press the FILTER button.

3. RELATIVE HUMIDITY ADJUSTER BUTTON: the humidity can be set from 35% to 80% in 5% steps with the + and - buttons, or you can set the appliance to continuous drain (CO) – maximum dehumidification.

4. DISPLAY: shows the relative humidity setting.

5. FAN SPEED BUTTON: press this button to set the fan speed (LOW / HIGH).

6. TIMER ON/OFF BUTTON: delayed on/off button (2 or 4 hour delay).

TIMER LED: shows the timer setting (2 or 4 hours).

HIGH/LOW FAN SPEED LED: shows the fan speed: HIGH or LOW.

TANK FULL LED: when the tank is full, the TANK FULL LED comes on and the appliance stops running. A 10 second beep sounds. Remove the tank and empty it (as indicated in "HOW TO ELIMINATE CONDENSATION"), then restore it; the dehumidifier will start running again.

STAND BY LED.

CONTINUOUS LED: shows that the dehumidifier is running in continuous mode.

FILTER RESET LED: indicates that the filter must be cleaned.

DEFROST: the dehumidifier is designed to operate at ambient temperatures from **+ 5°C to + 35°C**.

If it is operated at low temperatures, ice may form on the evaporator, degrading its operation.

When this happens, the dehumidifier goes into defrost mode. The compressor stops, but the fan continues running.

We recommend not using the dehumidifier in room temperatures lower than 5°C.

AUTO RESTART: the dehumidifier starts up again after a power failure.

MEMORY FUNCTION: the dehumidifier maintains its settings during a power failure.

CLEANING AND MAINTENANCE

MAINTENANCE OF THE HUMIDIFIER'S EXTERIOR SURFACE

Warning

Always pull the dehumidifier's plug out of the power socket before cleaning it, to prevent electric shock and malfunction.

Warning

Do not wet the appliance or immerse it in water, otherwise electric shocks may occur.

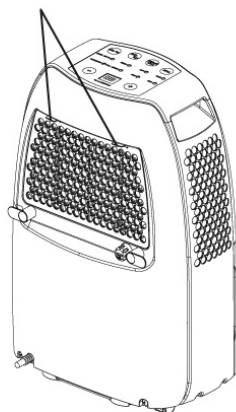
Use a damp and soft cloth to clean the exterior surface of the dehumidifier.

Do not use solvents, petrol, xylene, talcum powder or brushes to clean the unit: these may damage the surface or colour of the casing.

CLEANING THE WATER TANK

We advise removing the tank once every few weeks to prevent mould and bacteria forming on it. Fill the tank with clean water a small amount of detergent; swirl the water around in it, then tip it out and rinse it thoroughly.

CLEANING THE AIR FILTER



The filter is designed to remove dust or dirt from the air.

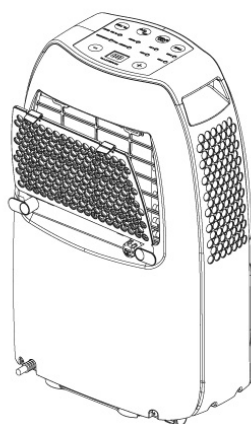
If the filter is clogged by dust, electricity consumption will be higher than normal.

For most effective dehumidification, clean the filter every 250 hours of operation. After 250 hours of operation, the FILTER RESET (Dry Digit 13 and 17) led turns on to indicate that it is time to clean the filter.

Cleaning instructions:

- 1. Compress the two tabs and pull the filter out.**
- 2. Clean the filter with a vacuum cleaner or wash it with clean water at no more than 40°C.**
- DO NOT USE ALCOHOL, BENZENE OR OTHER AGGRESSIVE PRODUCTS TO CLEAN THE FILTER.**
- 3. Leave the filter to dry naturally, then reposition it in the relevant slot.**
- 4. Press the FILTER button (Dry Digit 13 and 17 only).**

The Dry Baby 11's filter also needs periodic cleaning (this unit has no FILTER RESET led or FILTER button).



REGULATION (EU) N. 517/2014 - F-GAS

The unit contains R134A, a fluorinated greenhouse gas with global warming potential (GWP) = 1430. Do not release R-134a into the atmosphere.

INFORMATION FOR THE CORRECT DISPOSAL OF THE PRODUCT IN ACCORDANCE WITH EUROPEAN DIRECTIVE 2012/19/EU



This appliance may not be scrapped with domestic waste at the end of its life cycle. We call your attention to the crucial role played by the consumer in the re-use, recycling and other forms of recovery of such waste.

The appliance must be scrapped by a sorted waste disposal centre or by returning it to the retailer (no charge is levied for this service), when you purchase a new equivalent appliance.

Sorted disposal of electric and electronic equipment prevents the negative effects on the environment and human health resulting from improper scrapping, and also allows the materials from which it is made to be recovered and recycled, with significant savings in terms of energy and resources.

The sorted disposal requirement is indicated by the crossed waste bin label affixed to the appliance.



improve your life

www.argoclima.com